

## MODEM QUICK INSTALLATION GUIDE

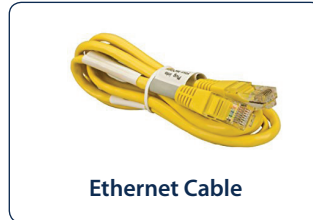


Before you begin the installation of your modem, please ensure you have received confirmation of the due date for your High Speed Internet Service. You may install your modem on or after this date.

### 1 INCLUDED EQUIPMENT:



Technicolor 4400 Modem



Ethernet Cable

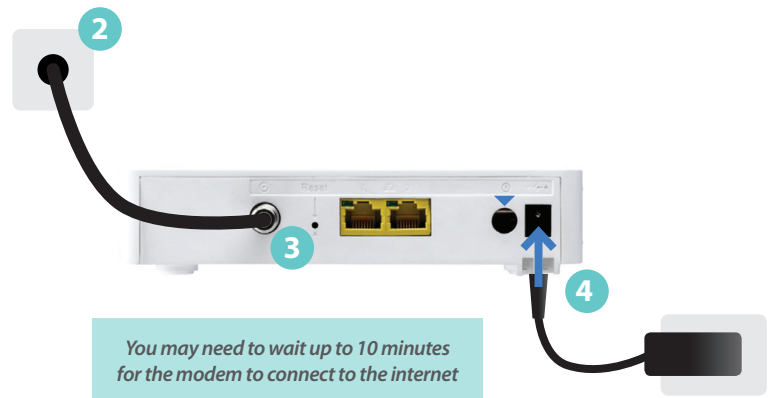


Power Adapter

## STEP 1: GETTING STARTED CONNECTING THE MODEM

1. Check the content of your package to confirm you have all items shown (*Modem, Ethernet Cable and Power Adapter*).
2. Locate the new or existing cable connection into your home.
3. Using the coaxial cable connection into your home, connect to the cable port of your modem until securely fastened.
4. Plug the power adapter into the modem's power inlet port and then plug into a nearby power outlet.
5. After a few minutes, the Online LED will be solid green. This indicates your connection to the Internet.

If the DS and US LEDs are blinking at the same time, your modem is updating its software. Wait until the upgrade has been completed! This may take several minutes. Do NOT unplug or remove the Ethernet cable from your modem!



## STEP 2: CONNECTING A DEVICE TO YOUR MODEM

If desired, you can connect a device to your modem using a wired Ethernet connection:

1. Take the Ethernet cable (included with your modem) and connect one end of the cable to the yellow Ethernet port labeled "1."

**Do NOT use the port labeled "2." The Internet connection is supplied through Ethernet port 1.**

2. Connect the other end of the Ethernet cable to your Device (for example, a router, computer, etc.).
3. Your Device is now connected to the Internet!

If you have questions regarding the connection to a router or additional device, please consult the manufacturer or installation guide specific to the device.

